

694 MASSACHUSETTS AVE RETAIL OPPORTUNITY

GSP

sean@graffitosp.com / 617.401.2352

dave@graffitosp.com / 617.401.2871

HARVARD SQUARE

INMAN SQUARE

THE NEIGHBORHOOD

1/4 mile / 5 minute walk

CENTRAL SQUARE

KENDALL SQUARE

CAMBRIDGEPORT

MIT



11,000
WORKING HERE

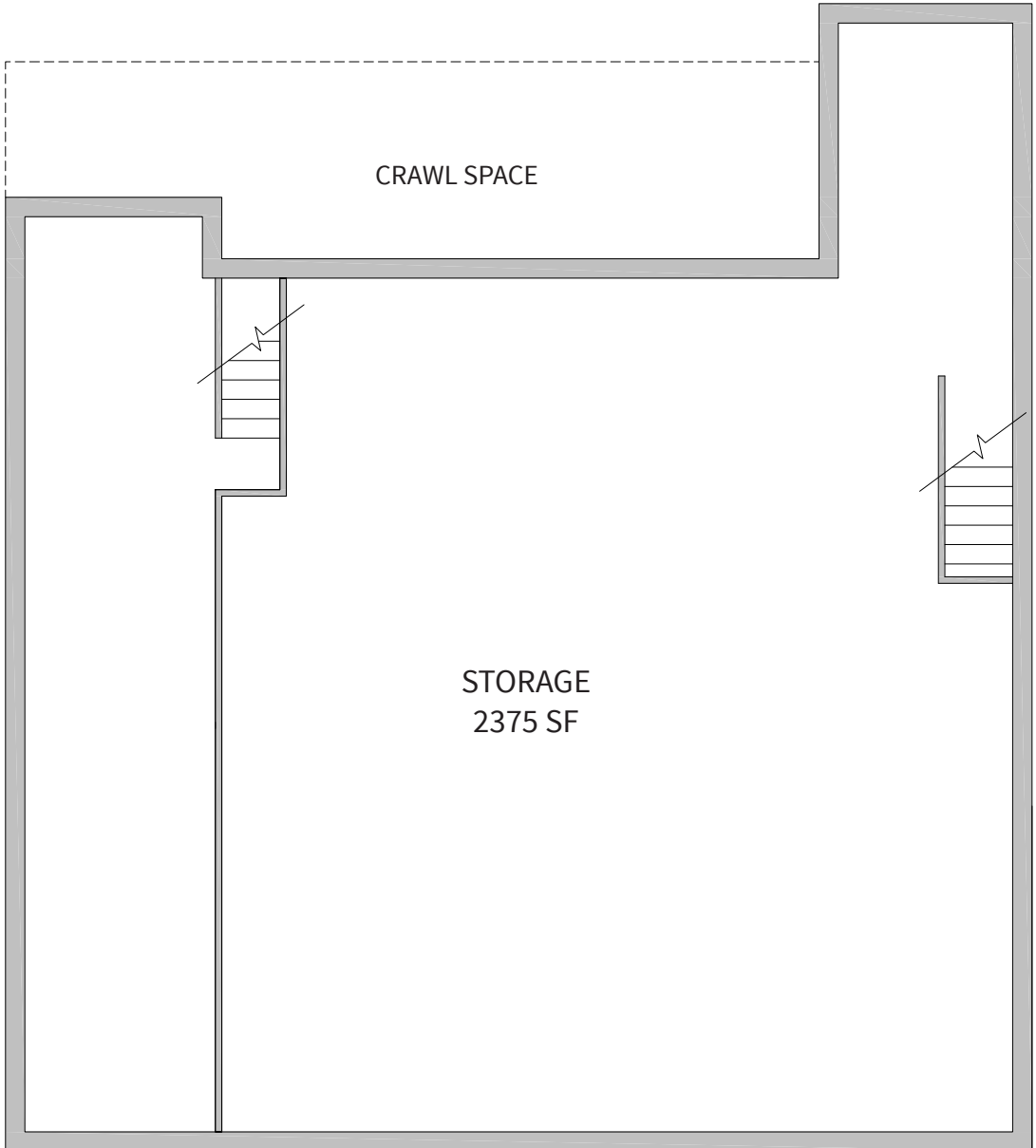
25,000
LIVING HERE

16,525
RED LINE DAILY RIDERSHIP AT CENTRAL

THE OPPORTUNITY

Located on the main commercial artery in Cambridge in the heart of Central Square. This single-story retail space is serviced by the fourth-most traveled station on the Red Line and is easily accessible by car, train, bus, bicycle and foot. The surrounding neighborhood boasts some of the best, most unique services, restaurants and retail in the region. The Premises is delivered turn-key with immediate occupancy available.


Ownership seeks a unique, experienced retail or restaurant operator to add to the existing retail fabric of the neighborhood.



BASEMENT

 AVAILABLE NOW

 12' CEILINGS

 1,969 RSF

 25 FT FRONTAGE